

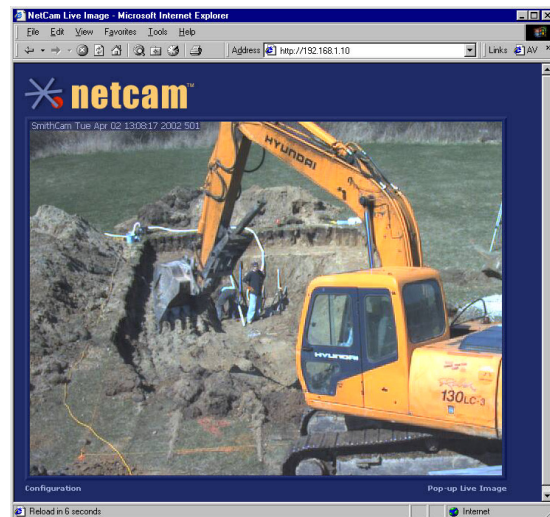
DIGITAL CAMERA + WEB SERVER = NETCAM



IP-Addressable Camera with Integrated Web Server Offers Highest Quality Live Images

The **StarDot Technologies NetCam** is both a high quality digital camera **and** a powerful web server, all in one small package. **NetCam** makes it easy to view high quality live digital images from anywhere in the world via the Internet... only a web browser is required. Regardless of what type of computer you own and what type of Internet connection you have, **NetCam** can provide you or the world with high resolution live images.

- Cost Effective Remote Imaging
- Excellent Tool for Management, Construction, Tourism, Marketing, Web Site Traffic Building, Security
- IP-Addressable, Built-in Web Server, Requires No PC to Operate!
- Connects Directly to LAN, Cable, DSL, Wireless or Modem (with ISP Account)
- Excellent Digital Image Quality, Up to 1280x960 Resolution (NetCam MP)
- View and Configure with any Graphical Web Browser, No Plug-Ins Required
- Automatically Archives on Remote Server
- Outdoor Enclosures and Wide Selection of Lenses Available
- Easy to Use, Turnkey Solution
- Compatible with StarDot DVR security recording software



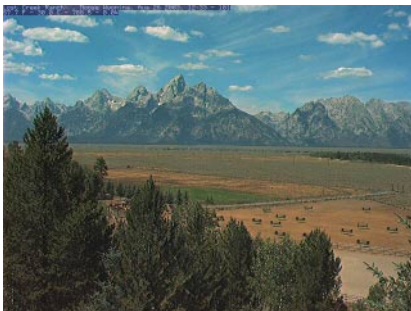
For more information, call us at **1-888-STARDOT** (888-782-7368) or visit us at www.stardot-tech.com

STAR DOT 
Technologies
www.stardot-tech.com

netcam

Digital Internet Camera with Integrated Web Server

Excellent Digital Image Quality up to 640x480



These are actual NetCam customer images. They have not been modified or enhanced in any way.

Software and Web Server Built Into NetCam



www.stardot-tech.com

6820-H Orangethorpe Ave, Buena Park, CA 90620
714.228.9282 • 714.228.9283 fax • 888-STAR DOT

© Copyright 2003 StarDot Technologies, Information Subject to Change

NetCam Specifications

Imaging

- NetCam = Sharp 1/3" CCD sensor, 640x480 RGB, Frame Transfer
- NetCam MP = Sony 1/2" CCD sensor, 1280x960 RGB, Frame Transfer
- Exposure range: 1/100,000 second - 1.3 seconds
- Auto/manual exposure, auto/manual color balance, sharpening
- Contrast enhancement, gamma correction
- Customizable date/time/text overlay
- Image format: JPEG, adjustable quality / filesize
- Transfer Speed: 320x240 (LAN, 1 second; modem, 5-10 seconds)
640x480 (LAN, 4 seconds; modem, 8-20 seconds)
1280x960* (LAN, 7 seconds; modem, 15-40 seconds)
(*1280x960 resolution only available on NetCam MP model)
- Lens: 8mm C-Mount with manual iris and focus rings
- Lens Mount: Industry standard CS-Mount, includes C-Mount adapter

Operating System / CPU

- uClinux operating system
- Motorola Coldfire CPU
- Built-in web server, telnet server and FTP client
- Supported protocols: TCP/IP, HTTP, FTP, ARP, Telnet, Daytime
- 16MB DRAM, 2MB Flash Memory
- Security: Password-protected user accounts for viewing and configuring NetCam

Connectivity

- 1 x 10-baseT Ethernet, RJ-45
- 2 x RS-232 Serial Ports, DB9 Male, up to 115.2Kb
- 4 x digital alarm inputs or 4 x 5V swing output pins
- 1 x fully isolated relay rated at 28VDC 2A or 125VDC 0.5A

Physical

- Dimensions: 3.25" W (82.5mm) x 2.20" H (55.9mm) x 6.56" L (166.6mm)
Included lens adds 1.1" (27.9mm) to length, Included (removable) 1/4" tripod mount adds 0.4" (10.1mm) to height
- Weight: 19.5 ounces (553 grams)
- Case: Aluminum clam shell body, argentan alloy front cover
- Mounting: Universal 1/4" tripod mount, top or bottom of camera
- Operating temperature range: -40° - +120° F (-40° - +48° C)
- Power Requirements: 8VDC-15VDC, 500mA @ 12V, 12VDC power supply included
- EMI Approval: FCC, Class A



Two Serial Ports - Connect NetCam to analog or wireless modem, or accessories like weather station & automation controller

Power Jack - Includes single cable for both power and data -- great for rooftop, ceiling and remote installations

Aux and I/O Ports - Connect to alarm system and motorized zoom lens

Built-in Ethernet Port - Plug NetCam directly to LAN, Cable Modem or DSL network

Contents Include:

- NetCam Camera with Integrated Web Server
- 8mm C-Mount Lens with Manual Iris/Focus
- 50 ft. Combination Power/Network Cable
- Power Supply (12VDC, 1A)
- Indoor Wall Mount
- Dial-Out Package Includes External Modem
- Easy-to-Use *StarDot Tools* Setup Software