

# Express 6

## VIDEO SERVER

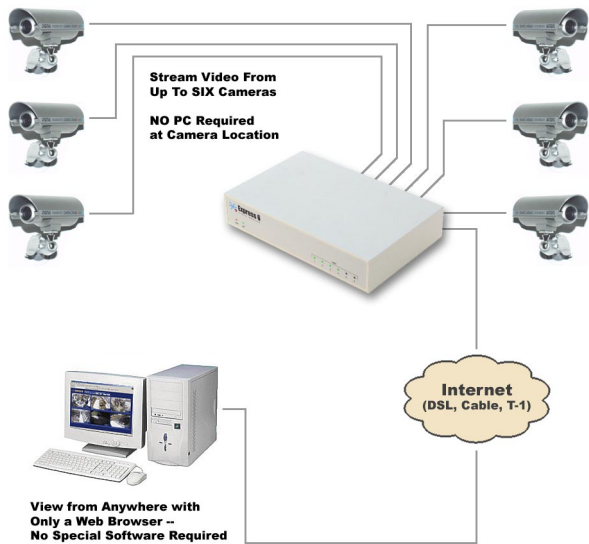
### Stream Up To Six Video Cameras over your LAN or the Internet using the Express 6™ Video Server

The StarDot Technologies Express 6™ Video Server is a small standalone device that connects directly to your local network or the Internet and gives you access to streaming video feeds from up to six video sources.

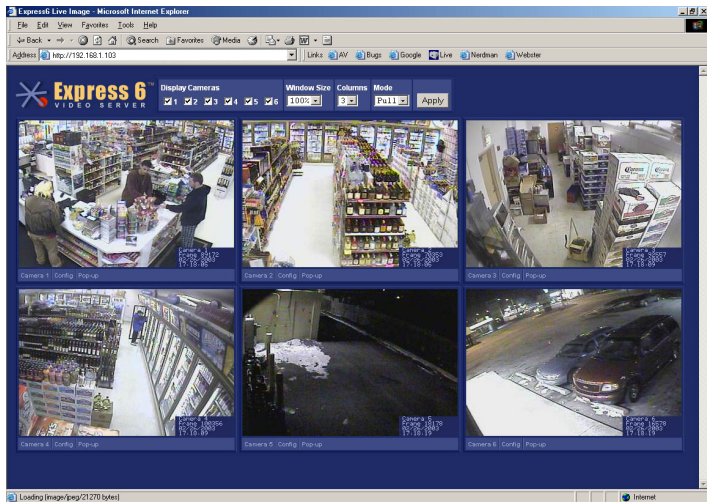
The Express 6™ makes it easy to view high quality digital video streams from anywhere in the world via the Internet. Viewing and configuration is done with a web browser, and no host PC is required at the camera location.

If you already have CCTV cameras, the Express 6™ will bring them into the 21st century by allowing you to view your cameras from anywhere with only a web browser.

Not a computer or networking expert? No problem -- the Express 6™ is easy to install, secure and fast. It's the perfect solution for adding network accessible video anywhere.



- Cost Effective Remote Imaging
- Excellent Tool for Surveillance, Security, Theft Deterrence, Property Management, Day Care Centers
- IP-Addressable, Built-in Web Server, Requires No PC to Operate!
- Connects Directly to LAN, Cable, DSL, Wireless or Modem (with ISP Account)
- Excellent Digital Image Quality, Up to 704x480 Resolution
- View and Configure with any Graphical Web Browser, No Plug-Ins Required
- Automatically Archives Images on Remote Server or Record to DVR
- Use with Existing Video Cameras or Bundle with StarDot Cameras
- Easy to Use, Turnkey Solution
- Simple to Install!

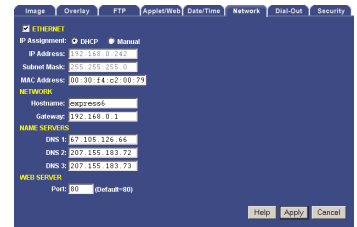


## GENERAL SPECIFICATIONS

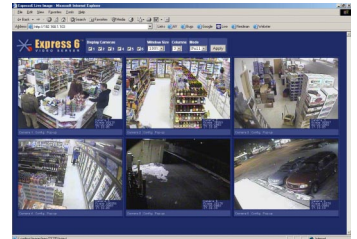
Feature	Benefit
<b>Standalone Operation</b>	Does not require a dedicated PC in order to operate -- The Express 6 video server is a true standalone device that plugs directly into a network or modem.
<b>Six Video Inputs</b>	One Express 6 can stream video and images from up to six video cameras. This is 50% more than most competitors.
<b>Cost Effective</b>	The Express 6 "per video port" cost is up to 50% less than competing video servers.
<b>IP-Addressable</b>	Video streams and configuration menus can be viewed from anywhere by simply entering the IP address in a web browser.
<b>Password-Protected</b>	Configuration menus and video streams are username/password protected to prevent unauthorized access.
<b>Browser-Based</b>	No special software or downloads are needed to access the Express 6. Any java-enabled web browser can be used, including browsers on Windows, MacOS and UNIX/Linux.
<b>Triggered Smart Capture</b>	A sequence of images can be uploaded or e-mailed based on a triggered event (alarm system, motion detector, door sensor, etc.), including both pre- and post-alarm images.
<b>Built-In FTP Client</b>	The Express 6 can be programmed to upload images to your web server based on the schedule you set. Each video input's upload schedule is independent.
<b>Power Injected Cable</b>	Optional power/video cables are available. This is the key to easy installation -- one cable carries both power and video which means a wall outlet is not needed near the cameras and only one cable needs to run to each camera.
<b>Date/Time</b>	Auto network time synchronization or manual time set. Time/Date and custom text is printed on live image, flexible font color and positioning.
<b>Complete Solution</b>	Express 6 "Security Camera System in a Box" bundles are available, included are the video server, cameras, mounts, cables, power supplies and easy-to-follow instructions.
<b>Warranty</b>	Limited 1-Year Warranty, Parts & Labor

## TECHNICAL SPECIFICATIONS

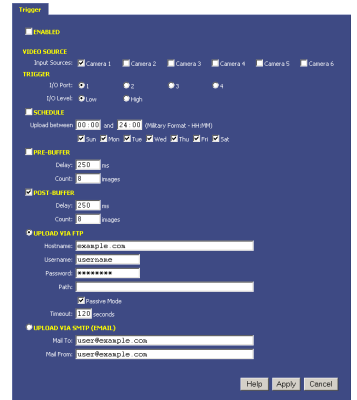
Spec	Detail
<b>Image Compression</b>	Industry Standard JPEG & MPEG-1
<b>Frame Rate</b>	Up to JPEG 10 FPS, MPEG 30 FPS
<b>Resolution</b>	NTSC: 702x480, 352x240, 176x120 PAL: 704x576, 352x288, 172x144
<b>Video Inputs</b>	6 x BNC composite video signals w/75ohm termination (selectable), NTSC, PAL or SECAM, RCA type adapters available, four of six inputs can be combined to allow 2 x S-VIDEO sources
<b>Video Decoder</b>	Adaptive 2/4-line comb filter for two dimensional chrominance/luminance separation resulting in increased luminance and chrominance bandwidth for all PAL and NTSC standards as well as reduced cross color and cross luminance artifacts
<b>Pre/Post Alarm Buffer</b>	Up to 1.8MB available for pre- and post-alarm buffer image storage (or 180 10KB images)
<b>Network Connection</b>	1 x 10-baseT Ethernet (10/100 compatible)
<b>Network Protocols</b>	TCP/IP, HTTP, FTP, DHCP, ARP, PING, TELNET, DAYTIME, NTP, SMB, NFS
<b>Serial Connection</b>	2 x RS-232 Ports, DB9, up to 115.2Kb/sec
<b>I/O Connectors</b>	4 x Digital Alarm Inputs or 4 x 5V Swing Output Pins, 1 x Fully Isolated Relay, 2A@5V or 0.5A@28VDC, Output is 5VDC@50mA
<b>Internal Operating System</b>	uClinux
<b>Security</b>	Separate password-protected user accounts for administering the server and viewing the images, additional user accounts can be added
<b>Operating Temperature</b>	-4°F to +120°F (-20°C - +49°C)
<b>Physical</b>	Size: 9.1" W (231 mm) x 1.8" H (46 mm) x 6.65" D (168.5 mm), Weight: 22oz (625g)
<b>EMI Approval</b>	FCC Class A, CE (EN55024/1998, EN55022/1998)
<b>Power Requirements</b>	8VDC - 15VDC (500mA@12V)



Configuration is simple and done through a standard web browser



View up to six color or black & white images from anywhere over the Internet



Connect to alarm system or motion sensor and receive e-mailed images when alarm is triggered

### Contents Include:

- Express 6 Video Server with Integrated Web Server
- 50' CAT5 Network Cable
- Power Supply (9VDC, 1A)
- Easy-to-Use StarDot Tools Setup Software



www.stardot-tech.com  
6820-H Orangethorpe Ave, Buena Park, CA 9062C  
714.228.9282 • 714.228.9283 fax • 888-STARDOT

© Copyright 2003 StarDot Technologies, Information Subject to Change

